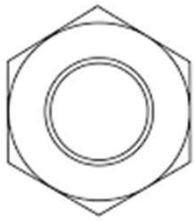


NAKRĘTKI

**GAT. A2 - 304 / A4 - 316
 INOX**

**NAKRĘTKA SZĘŚCIOKĄTNA
 DIN 934 / ISO 4032**



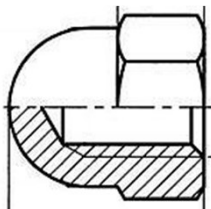
M3
 M4
 M5
 M6
 M8
 M10
 M12
 M14
 M16
 M18
 M20
 M22
 M24
 M27
 M30

**NAKRĘTKA SZĘŚCIOKĄTNA
 DIN 985 / ISO 10511**



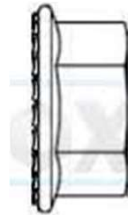
M3
 M4
 M5
 M6
 M8
 M10
 M12
 M14
 M16
 M18
 M20
 M22
 M24
 M27
 M30

**NAKRĘTKA KOŁPAKOWA
 DIN 1587 / PN 82181**



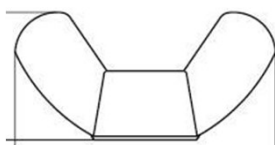
M3
 M4
 M5
 M6
 M8
 M10
 M12
 M14
 M16
 M18
 M20
 M22
 M24
 M30

**NAKRĘTKA SZĘŚCIOKĄTNA
 Z KOŁNIERZEM DIN 9345**



M6
 M8
 M10

**NAKRĘTKA MOTYLKOWA
 DIN 315**



M3
 M4
 M5
 M6
 M8
 M10
 M12
 M14
 M16
 M20
 M24

**NITONAKRĘTKA
 DIN 9314**



M3
 M4
 M5
 M6
 M8
 M10